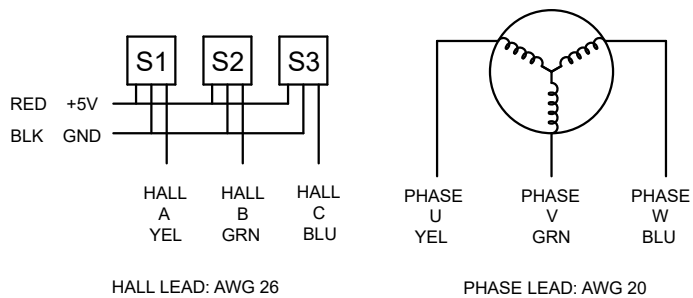
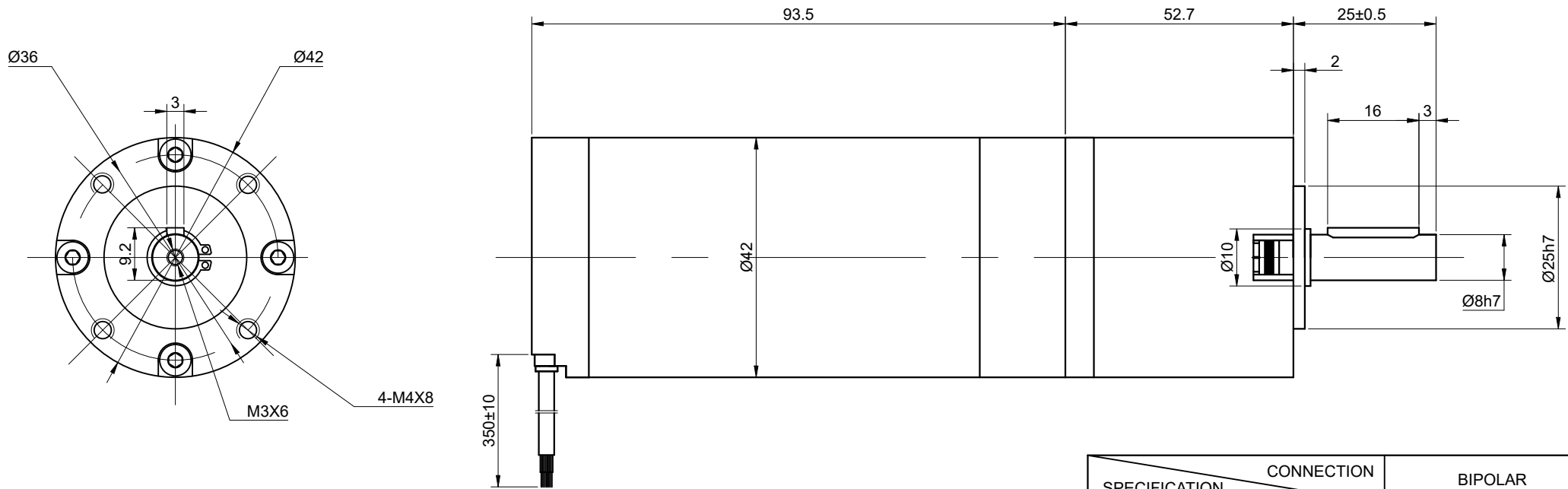


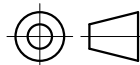
DWG NO. -



SPECIFICATION	CONNECTION	BIPOLAR
GEAR RATIO		99.5
NO. of PHASES		3
NO. of POLES		4
RATED VOLTAGE(V)		24
RATED TORQUE(N.m)[lb-in]		6.9[61.07]
RATED POWER(W)		30
RATED SPEED(RPM)		30
RATED CURRENT(A)		1.66
RATED SPEED w/o GEARBOX(RPM)		3400 \pm 10%
WEIGHT(kg)		0.9kg
SENSOR		HALL
AMBIENT TEMPERATURE		-10°C~50°C[14°F~122°F]
INSULATION CLASS		B 130°C[266°F]
TEMPERATURE RISE		MAX.80°C

UNIT mm
 GB/T 1804-M EQV.ISO 2768-1 CLASS M:

<=6	± 0.1
>6~30	± 0.2
>30~120	± 0.3
>120~400	± 0.5



mm

UNITS	DRN	LJ	1.14.2026
2:3	APVD	MYX	1.14.2026
SCALE	SIGNATURE	DATE	

GEARED BLDC MOTOR

M42B30-24P-30S/G42-99.5S1

OSMTEC[®]
 Stepper Motor Specialists