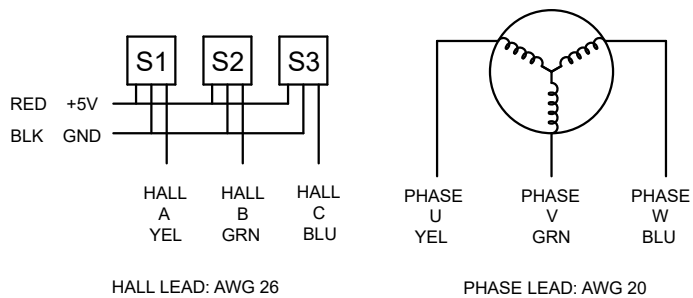
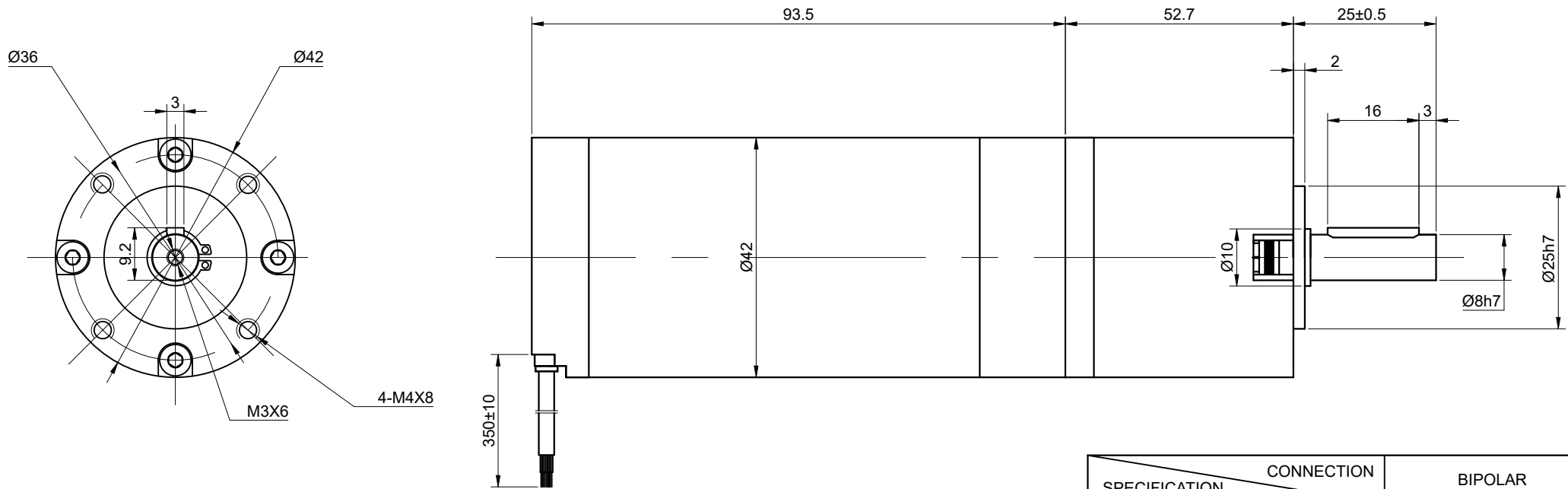
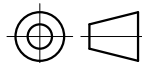


DWG NO. -



SPECIFICATION	CONNECTION	BIPOLAR
GEAR RATIO		50.9
NO. of PHASES		3
NO. of POLES		4
RATED VOLTAGE(V)		24
RATED TORQUE(N.m)[lb-in]		3.5[30.98]
RATED POWER(W)		30
RATED SPEED(RPM)		59
RATED CURRENT(A)		1.66
RATED SPEED w/o GEARBOX(RPM)		3400 $\pm$ 10%
WEIGHT(kg)		0.83kg
SENSOR		HALL
AMBIENT TEMPERATURE		-10°C~50°C[14°F~122°F]
INSULATION CLASS		B 130°C[266°F]
TEMPERATURE RISE		MAX.80°C

UNIT mm	
GB/T 1804-M EQV.ISO 2768-1 CLASS M:	
<=6	$\pm 0.1$
>6~30	$\pm 0.2$
>30~120	$\pm 0.3$
>120~400	$\pm 0.5$



mm

UNITS

2:3

SCALE

DRN

LJ

1.14.2026

APVD

MYX

1.14.2026

SIGNATURE

DATE

**OSMTEC**<sup>®</sup>  
 Stepper Motor Specialists

**GEARED BLDC MOTOR**

**M42B30-24P-30S/G42-50.9S1**