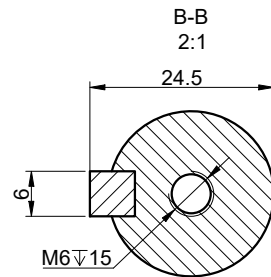
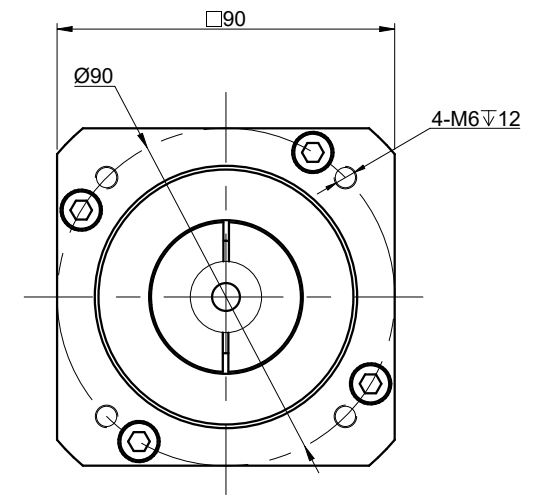
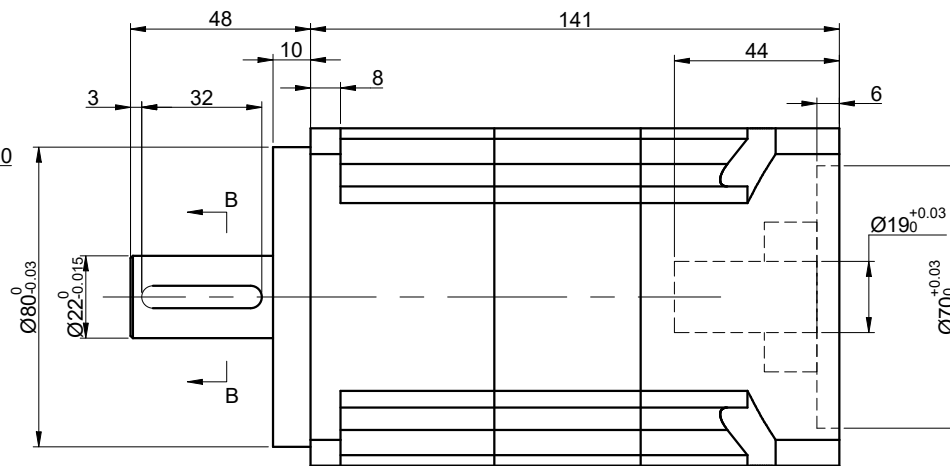
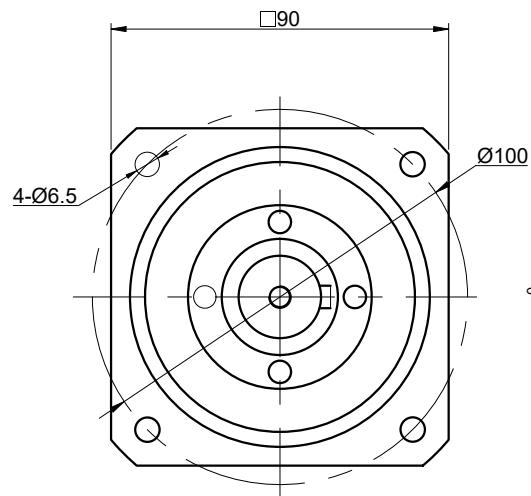
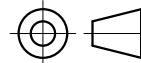


DWG NO. -



SPECIFICATION	VALUE
GEAR RATIO	50
EFFICIENCY	97%
BACKLASH@NO-LOAD(arcmin)	<=5
MAX.PERMISSIBLE TORQUE(Nm)[lb-in]	112.00[991.28]
MOMENT PERMISSIBLE TORQUE(Nm)[lb-in]	224.00[1982.57]
SHAFT MAXIMUM AXIAL LOAD(N)	1300
SHAFT MAXIMUM RADIAL LOAD(N)	3250
GEARBOX MATCHING MOTOR'S INPUT SHAFT LENGTH (mm)	MAX 44
RATED INPUT SPEED(RPM)	3000
MAX. INPUT SPEED(RPM)	6000
NOISE(dB)	60
WATERPROOF RATING	IP65
LIFE(h)	20000
WORKING TEMPERATURE	-20°C~150°C[-4°F~302°F]

**OSMTEC**<sup>®</sup>  
Stepper Motor Specialists



mm			
UNITS	DRN	LJ	1.13.2026
1:2	APVD	MYX	1.13.2026
SCALE	SIGNATURE	DATE	

**PLANETARY GEARBOX**

**HTG90-G50**