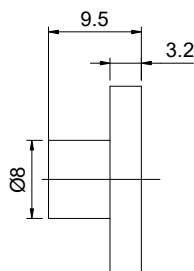
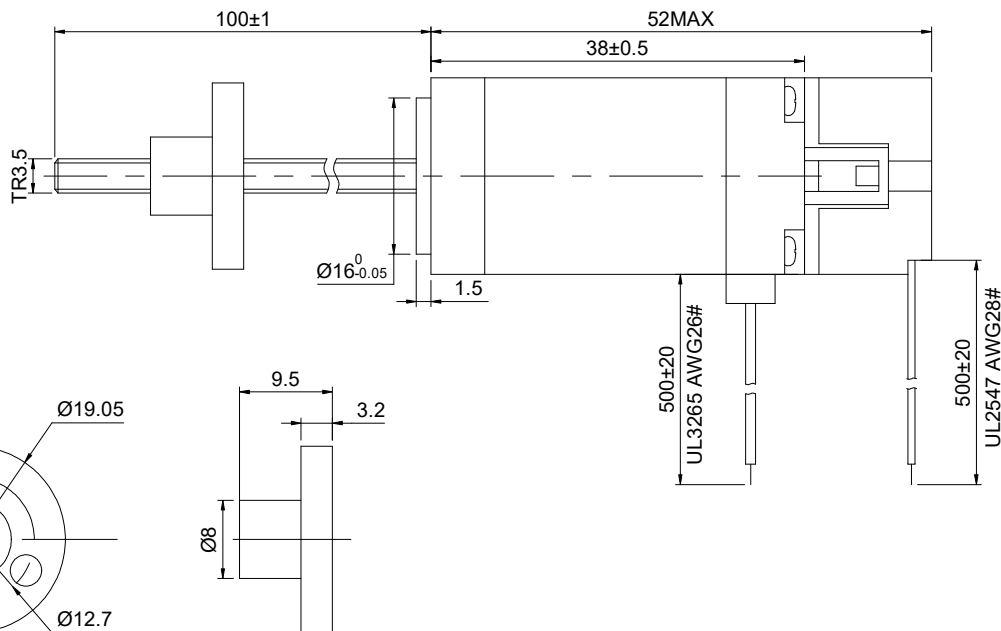
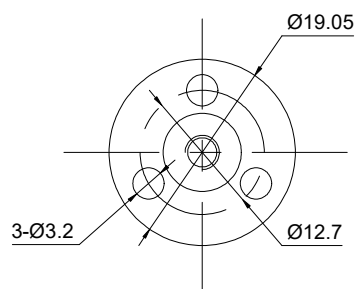
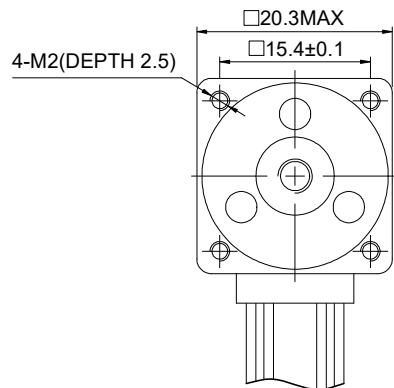


DWG NO. -



ENCODER RESOLUTION:1000PPR(4000CPR)

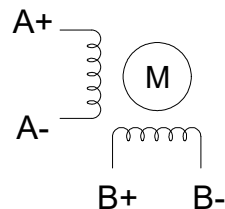
LEAD COLOR	RED	BLK	WHT	BLU	GRN	BRN	YEL	PUE	BLK
DESCRIPTION	VCC	GND	EA+	EA-	EB+	EB-	EZ+	EZ-	SHIELD

FULL STEP 2 PHASE-Ex.,WHEN FACING MOUNTING END (X)

STEP	A+	B+	A-	B-		CCW
1	+	+	-	-	↓ ↑ CW	↑
2	-	+	+	-		
3	-	-	+	+		
4	+	-	-	+		

UNIT mm
GB/T 1804-M EQV.ISO
2768-1 CLASS M:
<=6 ±0.1
>6~30 ±0.2
>30~120 ±0.3
>120~400 ±0.5

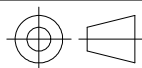
WINDING



CONNECTION

SPECIFICATION			BIPOLAR	
AMPS/PHASE			0.50	
RESISTANCE/PHASE(Ohms)@25°C			12.50±10%	
INDUCTANCE/PHASE(mH)@1KHz			4.50±20%	
HOLDING TORQUE(Nm)[lb-in]			0.02[0.18]	
STEP ANGLE(°)			1.80	
STEP ACCURACY(NON-ACCUM)			±5.00%	
PIN NO	BIPOLAR	LEADS	LEAD(mm)	
1	A+	RED	LINEAR TRAVEL/STEP(mm)	0.005
2	A-	RED/WHT	AMBIENT TEMPERATURE	-10°C~50°C[14°F~122°F]
3	B+	GRN	INSULATION CLASS	B 130°C[266°F]
4	B-	GRN/WHT	TEMPERATURE RISE	MAX.80°C

OSMTEC[®]
Stepper Motor Specialists



mm			
UNITS	DRN	LDJ	1.15.2026
3:2	APVD	ZPJ	1.20.2026
SCALE	SIGNATURE		DATE

LINEAR STEPPER MOTOR

8E15S0504SC4-100RS-OE1K