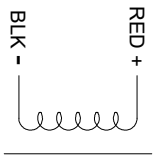


BRAKE CONNECTIONS

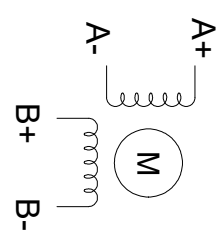
24V 7.0N.m



FULL STEP 2 PHASE-EX. WHEN FACING MOUNTING END (X)

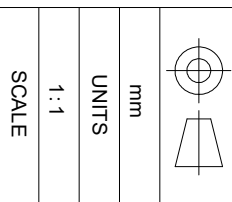
STEP	A+	B+	A-	B-	CCW	CW
1	+	+	-	-		UNIT mm GB/T 1804-M EQV. ISO 2768-1 CLASS M: ≤±6 >6~30 ±0.1 >30~120 ±0.3 >120~400 ±0.5
2	-	+	+	-		
3	-	-	+	+		
4	+	-	-	+		

WINDING



PIN NO	BIPOLAR	LEADS	SPECIFICATION		CONNECTION	
			AMPS/PHASE	RESISTANCE/PHASE(Ohms)@25°C	BIPOLAR	
1	A+	BLK	6.0	0.80±10%		
2	A-	GRN		9.00±20%		
3	B+	RED		13.00[14.06]		
4	B-	BLU		9.00±20%		
STEP ANGLE(°)			1.80			
STEP ACCURACY(NON-ACCUM)			±5.00%			
ROTOR INERTIA(g·cm²)			3600			
WEIGHT(Kg)[lb]			5.92[13.05]			
AMBIENT TEMPERATURE			-10°C~50°C[14°F~122°F]			
INSULATION CLASS			B 130°C[266°F]			
TEMPERATURE RISE			MAX.80°C			

OSMTEC[®]
Stepper Motor Specialists



DRN	LDJ	1.7.2026
APVD	ZPJ	1.19.2026
SCALE		DATE

STEPPER MOTOR
34HS61-6004D-B700