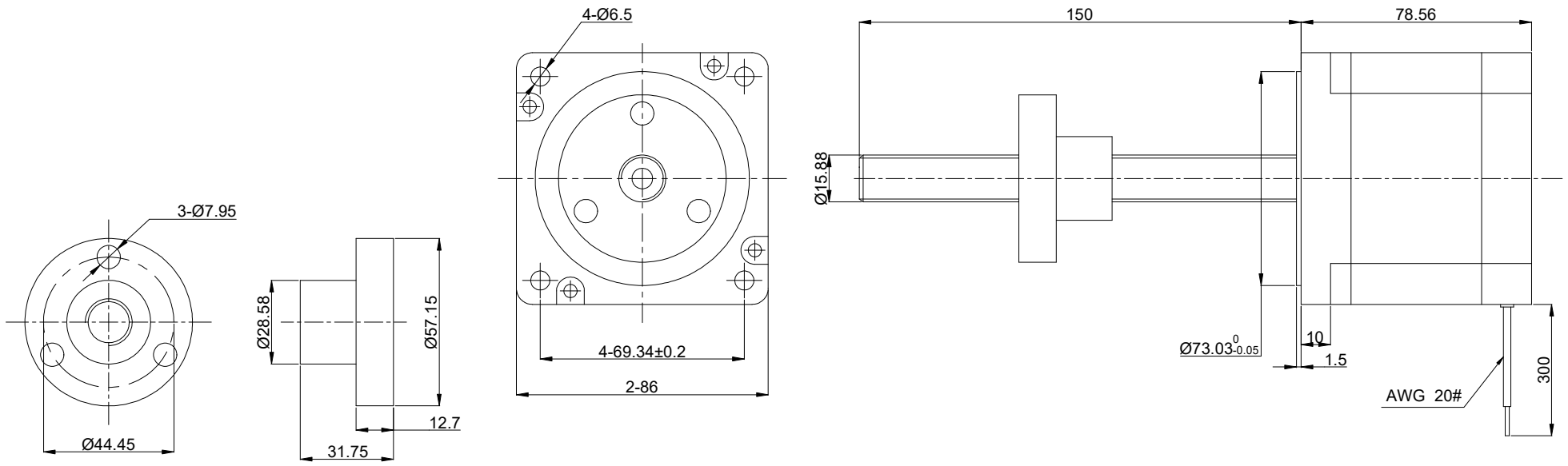


DWG NO. -



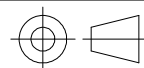
FULL STEP 2 PHASE-Ex.,WHEN FACING MOUNTING END (X)

STEP	A+	B+	A-	B-		CCW
1	+	+	-	-	↓ ↑ CW	↑
2	-	+	+	-		
3	-	-	+	+		
4	+	-	-	+		

UNIT mm
 GB/T 1804-M EQV.ISO
 2768-1 CLASS M:
 <=6 ±0.1
 >6~30 ±0.2
 >30~120 ±0.3
 >120~400 ±0.5

WINDING			CONNECTION		BIPOLAR
			SPECIFICATION		
			AMPS/PHASE	3.12	
			RESISTANCE/PHASE(Ohms)@25°C	1.60±10%	
			INDUCTANCE/PHASE(mH)@1KHz	8.80±20%	
			MINIMAL THRUST(N)@300 PPS	800	
			STEP ANGLE(°)	1.80	
			STEP ACCURACY(NON-ACCUM)	±5.00%	
PIN NO	BIPOLAR	LEADS	LEAD(mm)	6.35	
1	A+	RED	LINEAR TRAVEL/STEP(mm)	0.03175	
2	A-	RED/WHT	AMBIENT TEMPERATURE	-10°C~50°C[14°F~122°F]	
3	B+	GRN/WHT	INSULATION CLASS	B 130°C[266°F]	
4	B-	GRN	TEMPERATURE RISE	MAX.80°C	

OSMTEC[®]
 Stepper Motor Specialists



mm

UNITS

1:1

SCALE

DRN

APVD

SIGNATURE

LDJ

ZPJ

1.14.2026

1.19.2026

DATE

LINEAR STEPPER MOTOR

34E31S3124RK3-150RS