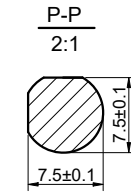
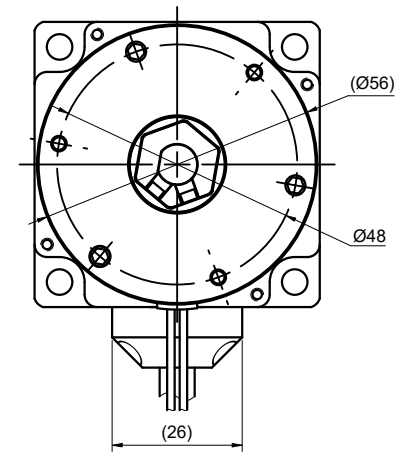
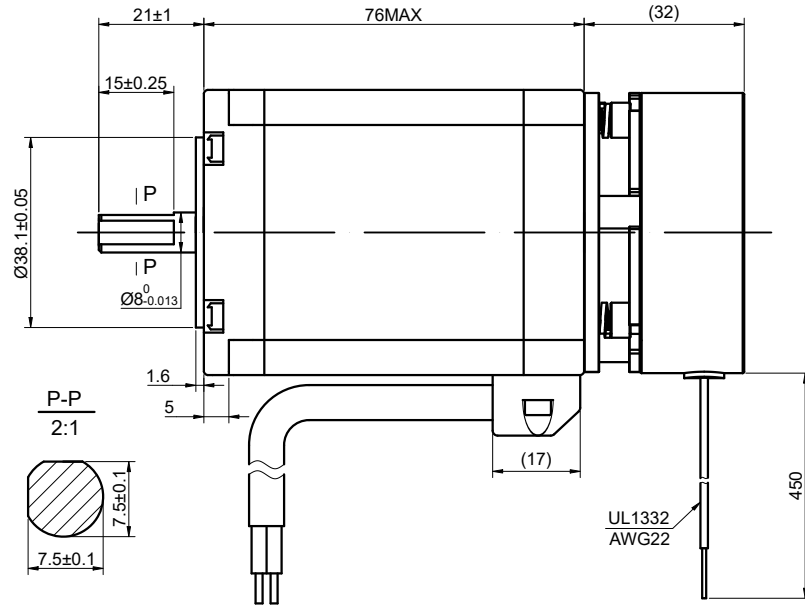
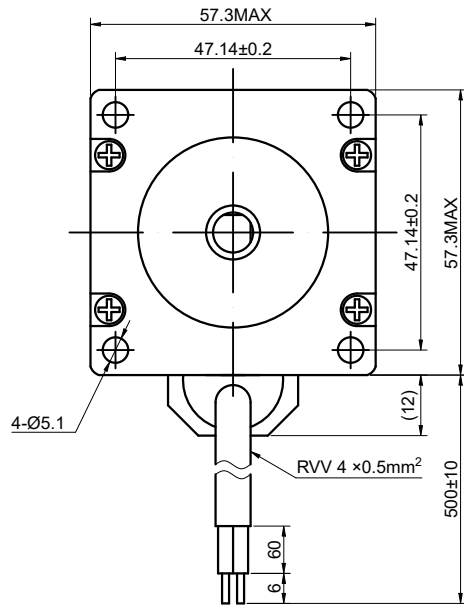


DWG NO. -



BRAKE SPECIFICATIONS	
VOLTAGE	24
POWER	11.5
STATIC FRICTION TORQUE(Nm)	2
MOMENT of INTERIA(kg.cm ²)	3.8x10 ⁻⁶
MAX. SPEED(rpm)	5000

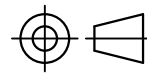
FULL STEP 2 PHASE-Ex., WHEN FACING MOUNTING END (X)

STEP	A+	B+	A-	B-		CCW
1	+	+	-	-		
2	-	+	+	-		
3	-	-	+	+		
4	+	-	-	+		

UNIT mm
 GB/T 1804-M EQV.ISO
 2768-1 CLASS M:
 <=6 ±0.1
 >6~30 ±0.2
 >30~120 ±0.3
 >120~400 ±0.5

WINDING			CONNECTION	
			SPECIFICATION	BIPOLAR
			AMPS/PHASE	2.80
			RESISTANCE/PHASE(Ohms)@25°C	1.13±10%
			INDUCTANCE/PHASE(mH)@1KHz	5.40±20%
			HOLDING TORQUE(Nm)[lb-in]	1.89[16.73]
			STEP ANGLE(°)	1.80
			STEP ACCURACY(NON-ACCUM)	±5.00%
PIN NO	BIPOLAR	LEADS	ROTOR INERTIA(g·cm ²)	—
1	A+	BLK	WEIGHT(Kg)[lb]	—
2	A-	GRN	AMBIENT TEMPERATURE	-10°C~50°C[14°F~122°F]
3	B+	RED	INSULATION CLASS	B 130°C[266°F]
4	B-	BLU	TEMPERATURE RISE	MAX.80°C

OSMTEC®
 Stepper Motor Specialists



mm

UNITS

2:3

SCALE

DRN

APVD

SIGNATURE

ZPJ

YSX

DATE

1.16.2026

1.16.2026

DATE

STEPPER MOTOR

23HS30-2804D-B200