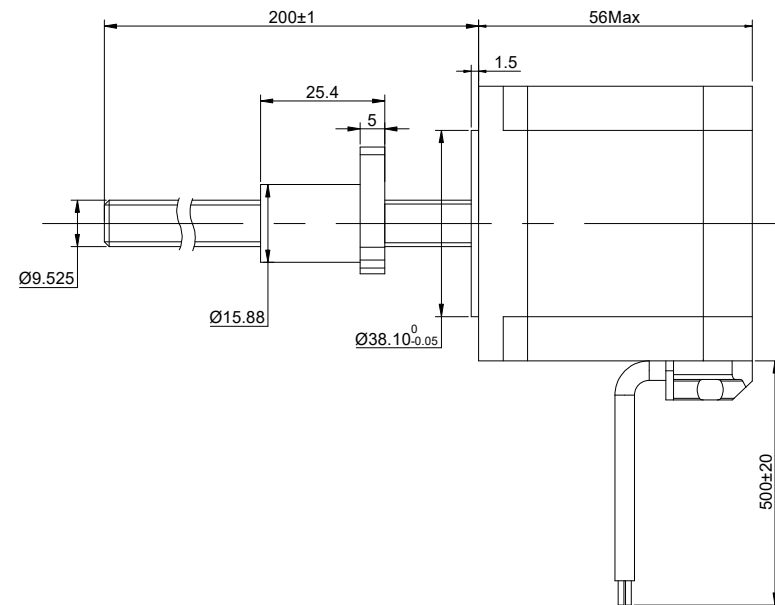
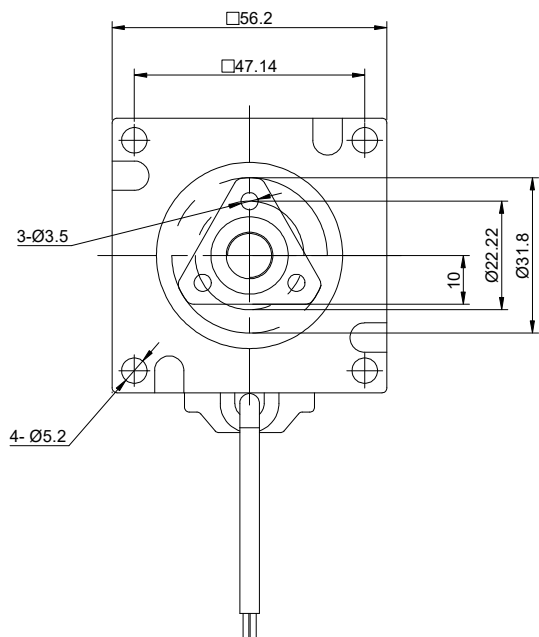


DWG NO. -

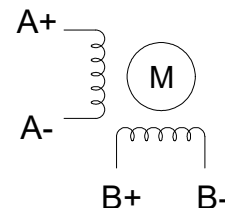


FULL STEP 2 PHASE-Ex.,WHEN FACING MOUNTING END (X)

STEP	A+	B+	A-	B-		CCW
1	+	+	-	-	↓ ↑	↑ ↓
2	-	+	+	-		
3	-	-	+	+		
4	+	-	-	+		

UNIT mm
GB/T 1804-M EQV.ISO
2768-1 CLASS M:
<=6 ±0.1
>6~30 ±0.2
>30~120 ±0.3
>120~400 ±0.5

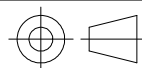
WINDING



CONNECTION

SPECIFICATION			BIPOLAR
AMPS/PHASE			3.00
RESISTANCE/PHASE(Ohms)@25°C			1.10±10%
INDUCTANCE/PHASE(mH)@1KHz			4.50±20%
HOLDING TORQUE(Nm)[lb-in]			1.00[8.85]
STEP ANGLE(°)			1.80
STEP ACCURACY(NON-ACCUM)			±5.00%
PIN NO	BIPOLAR	LEADS	LEAD(mm)
1	A+	RED	5.08
2	A-	RED/WHT	LINEAR TRAVEL/STEP(mm)
3	B+	GRN	0.0254
4	B-	GRN/WHT	AMBIENT TEMPERATURE
INSULATION CLASS			-10°C~50°C[14°F~122°F]
TEMPERATURE RISE			B 130°C[266°F]
			MAX.80°C

OSMTEC[®]
Stepper Motor Specialists



mm			
UNITS	DRN	LDJ	1.15.2026
2:3	APVD	ZPJ	1.20.2026
SCALE	SIGNATURE		DATE

LINEAR STEPPER MOTOR

23E22S3004HG5-200RS