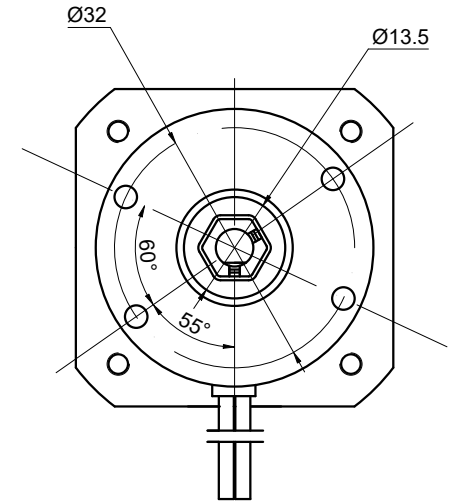
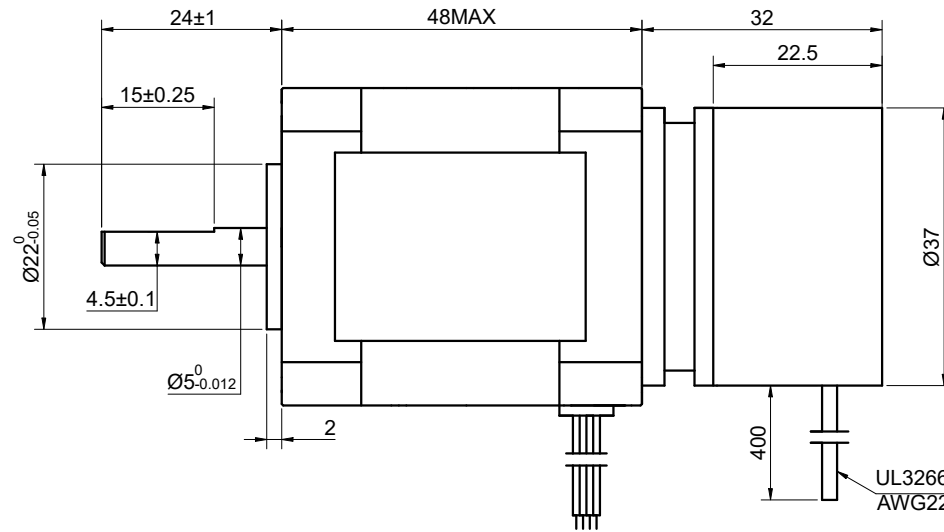
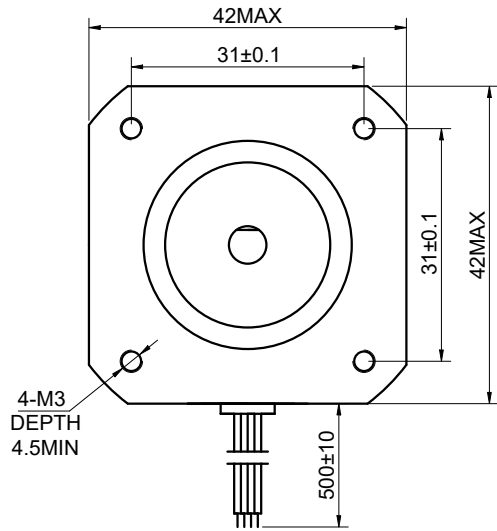


DWG NO. -



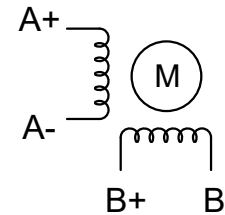
BRAKE SPECIFICATIONS

VOLTAGE	24
POWER	5
STATIC FRICTION TORQUE(Nm)	0.25
MOMENT of INTERIA(kg.cm ²)	0.6x10 ⁻⁶
MAX. SPEED(rpm)	5000

FULL STEP 2 PHASE-Ex., WHEN FACING MOUNTING END (X)

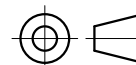
STEP	A+	B+	A-	B-		CCW
1	+	+	-	-		UNIT mm GB/T 1804-M EQV.ISO 2768-1 CLASS M: <=6 ±0.1 >6~30 ±0.2 >30~120 ±0.3 >120~400 ±0.5
2	-	+	+	-		
3	-	-	+	+		
4	+	-	-	+		

WINDING



WINDING			CONNECTION	BIPOLAR
			SPECIFICATION	
			AMPS/PHASE	2.00
			RESISTANCE/PHASE(Ohms)@25°C	1.40±10%
			INDUCTANCE/PHASE(mH)@1KHz	3.00±20%
			HOLDING TORQUE(Nm)[lb-in]	0.59[5.22]
			STEP ANGLE(°)	1.80
			STEP ACCURACY(NON-ACCUM)	±5.00%
PIN NO	BIPOLAR	LEADS	ROTOR INERTIA(g-cm ²)	—
1	A+	BLK	WEIGHT(Kg)[lb]	—
2	A-	GRN	AMBIENT TEMPERATURE	-10°C~50°C[14°F~122°F]
3	B+	RED	INSULATION CLASS	B 130°C[266°F]
4	B-	BLU	TEMPERATURE RISE	MAX.80°C

OSMTEC®
Stepper Motor Specialists



mm

UNITS	DRN	ZPJ	1.16.2026
1:1	APVD	YSX	1.16.2026
SCALE	SIGNATURE	DATE	

STEPPER MOTOR

17HS19-2004D-B025