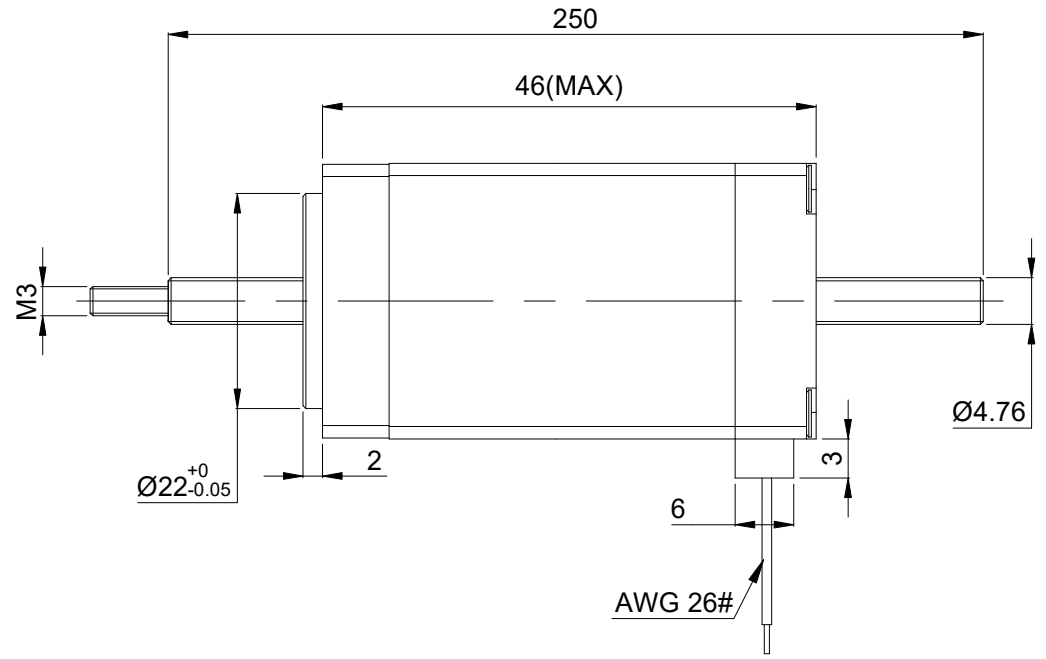
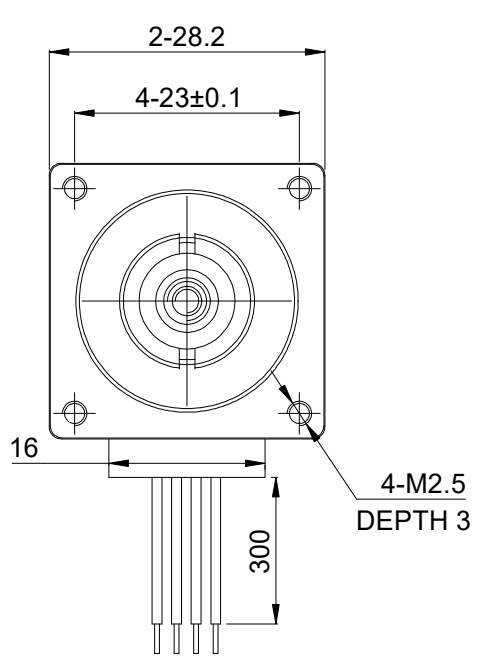


DWG NO. -



FULL STEP 2 PHASE-Ex.,WHEN FACING MOUNTING END (X)

STEP	A+	B+	A-	B-		CCW
1	+	+	-	-	↓ ↑ CW	↑ ↓ CCW
2	-	+	+	-		
3	-	-	+	+		
4	+	-	-	+		

UNIT mm
GB/T 1804-M EQV.ISO
2768-1 CLASS M:
<=6 ±0.1
>6~30 ±0.2
>30~120 ±0.3
>120~400 ±0.5

WINDING			CONNECTION		
			SPECIFICATION	BIPOLAR	
			AMPS/PHASE	0.75	
			RESISTANCE/PHASE(Ohms)@25°C	6.70±10%	
			INDUCTANCE/PHASE(mH)@1KHz	5.80±20%	
			MINIMAL THRUST(N)@300 PPS	59	
			STEP ANGLE(°)	1.80	
PIN NO	BIPOLAR	LEADS	LEAD(mm)	STEP ACCURACY(NON-ACCUM)	±5.00%
1	A+	RED	LINEAR TRAVEL/STEP(mm)		1.27
2	A-	RED/WHT	AMBIENT TEMPERATURE		-10°C~50°C[14°F~122°F]
3	B+	GRN/WHT	INSULATION CLASS		B 130°C[266°F]
4	B-	GRN	TEMPERATURE RISE		MAX.80°C

OSMTEC[®]
Stepper Motor Specialists

mm			
UNITS	DRN	LDJ	1.15.2026
SCALE	3:2	APVD	ZPJ 1.20.2026
	SIGNATURE		DATE

LINEAR STEPPER MOTOR

11N18S0754FD3-250RS