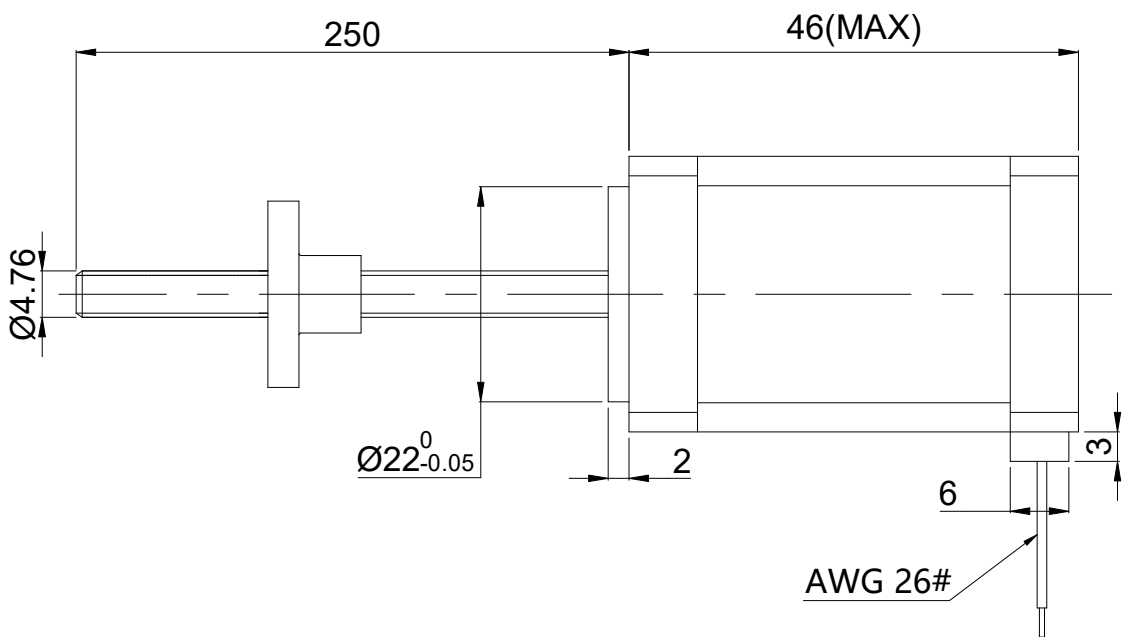
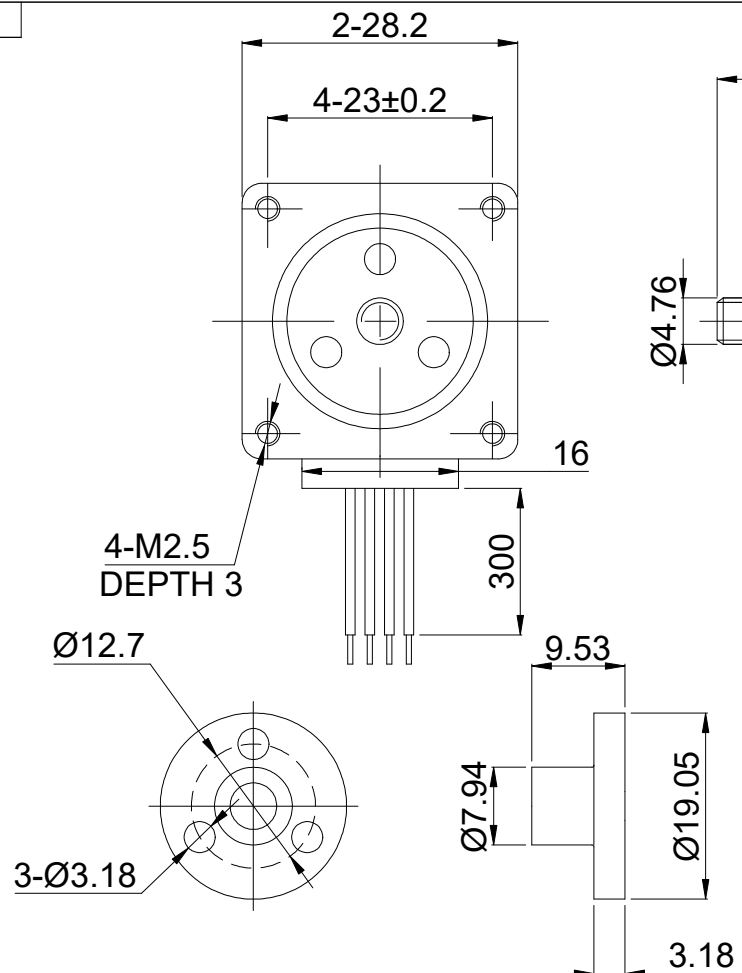


DWG NO. -



FULL STEP 2 PHASE-Ex.,WHEN FACING MOUNTING END (X)

STEP	A+	B+	A-	B-		CCW
1	+	+	-	-	↓ ↑ CW	↑
2	-	+	+	-		
3	-	-	+	+		
4	+	-	-	+		

UNIT mm  
 GB/T 1804-M EQV.ISO  
 2768-1 CLASS M:  
 <=6 ±0.1  
 >6~30 ±0.2  
 >30~120 ±0.3  
 >120~400 ±0.5

WINDING			CONNECTION		BIPOLAR
			SPECIFICATION		
			AMPS/PHASE		0.75
			RESISTANCE/PHASE(Ohms)@25°C		6.70±10%
			INDUCTANCE/PHASE(mH)@1KHz		5.80±20%
			MINIMAL THRUST(N)@300 PPS		77
			STEP ANGLE(°)		1.80
STEP ACCURACY(NON-ACCUM)		±5.00%			
PIN NO	BIPOLAR	LEADS	LEAD(mm)		0.635
1	A+	RED	LINEAR TRAVEL/STEP(mm)		0.003175
2	A-	RED/WHT	AMBIENT TEMPERATURE		-10°C~50°C[14°F~122°F]
3	B+	GRN/WHT	INSULATION CLASS		B 130°C[266°F]
4	B-	GRN	TEMPERATURE RISE		MAX.80°C

**OSMTEC**<sup>®</sup>  
 Stepper Motor Specialists

mm			
UNITS	DRN	LDJ	1.14.2026
SCALE	3:2	APVD	ZPJ 1.19.2026
	SIGNATURE		DATE

**LINEAR STEPPER MOTOR**

**11E18S0754ED3-250RS**